



2020
COLLECTION



PLANT & MACHINERY



ANSI/BIFMA X5.1 COMPLIANCE FOR PERFORMANCE TESTS

- ✓ ARMREST 60,000 cycles / 40kg angular load
- ✓ BASE 1,134 kg (Minimum)
- ✓ CASTORS 1,00,000 cycles
- ✓ MECHANISM 3,00,000 cycles
- ✓ GASLIFT 1,00,000 cycles



TESTING EQUIPMENT



MACHINE & MOULDS



PRODUCT DESIGNING



PACKAGING

ECO AFFAIR

To reduce carbon foot print, Pace Seating chairs are shipped knock down for local assembly. Dis-assembly is just as simple for easy transportation to relocate or for disposal.



2020 COLLECTION



“ I look at every piece of
furniture and every object
as an individual sculpture
Kelly Wearstler ”



Honeywell



harman/kardon
by HARMAN

osbIndia

wework

COMMScope



ellucian.

YODLEE

MICROLAND



CLIENTS

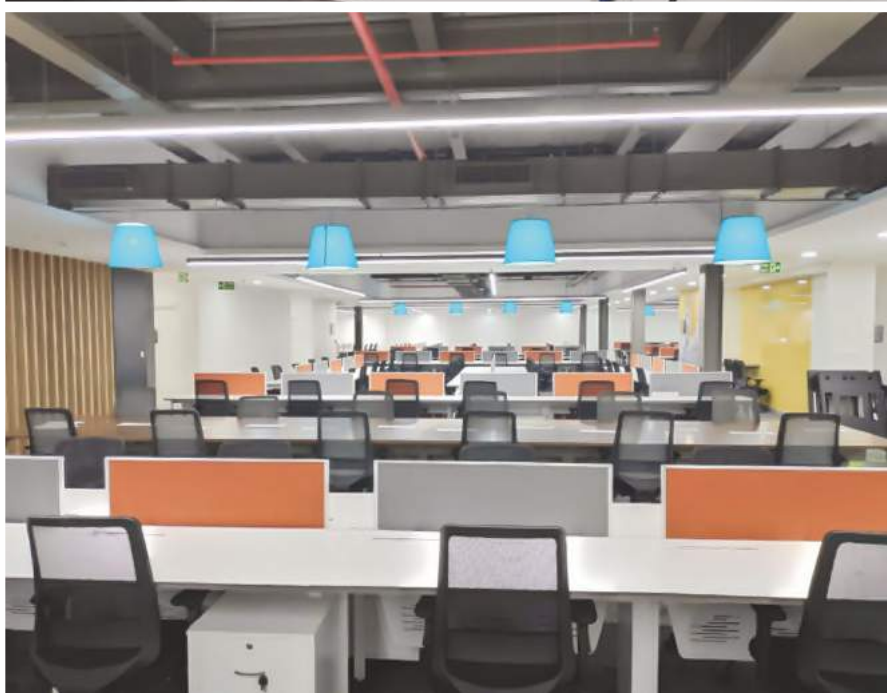




wework

FLOAT CHAIRS

40,000 seats supplied to WEWORK @ Bengaluru, Mumbai, Gurugram, Pune and Hyderabad.



WRAP CHAIRS
1220 seats
@ Hyderabad


High performance. Delivered.



VERSATILE PERFORMANCE
A delightful experience

RESPONSE

This is a chair that goes the extra mile to respond to your body movements. Response is a high performance chair, which accommodates people of different sizes and shapes. It is also fitted with a self calibrated mechanism that responds to different weights and adjusts accordingly for a comfortable working office experience.



High Back



Medium Back





FLEXIBLE & COMFORTABLE
Built for high performance

TRAP

The TRAP task chair is a twin back nylon chair with lumbar support adjustable option & flex lumbar support for back recline function. A chair that exercises your body while sitting on the job.



High Back



Medium Back





HIGH PERFORMANCE WITH FLEXIBILITY
A sleek new wave design

SCOOT

A new wave of design TASK CHAIR
with a sleek adjustable lumbar
support, upright mesh back &
options of Self Weight Mechanism
and multi point locking High Nylon
Sleek /Steel Base options with
60mm nylon castors.



Medium Back





GRACE AND STYLE
The perfect combination

FLOAT

FLOAT is a stylish chair with world class ergonomic credentials, thoughtfully designed with a comprehensive range of options. The Float task chair is real value for money to fit your ergonomic & economic needs.



High Back



Medium Back





CURVILINEAL MASTERPIECE
A plethora of features

WRAP

The name says it all. A wrap around design mesh back with great support to the upper back/shoulder. Adjustable lumbar for the entire lower back and a curved /formed designed back. 1/2 D arms for easy movement of the wrist. Self weight mechanism and seat slide are additional features for easy movement and flow of the chair. Feels like working from home with all the comforts in a desk chair.



High Back



Medium Back





ELEGANT & LIGHT
The epitome of comfort

CLOUD

CLOUD is a free flow designed chair with sleek polypropylene back, with aluminium die cast connectors, fine tune lumbar support and knee tilt multi position mechanism and steel base. The Cloud chair glides into any office effortlessly for its style and looks.



High Back



Medium Back





BEAUTIFUL AND ERGONOMICAL
A unique design

LOOP

LOOP is a multi fit chair with its unique nylon loop back, where one could loop towards any angle even when the chair is in a 90° back position. Loop chair has a self calibrating mechanism that will adapt according to an individual's weight.

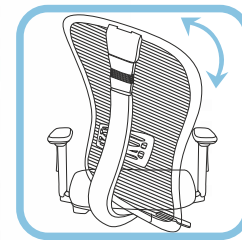


Medium Back

Elasto Mesh Seat & Back



Medium Back





YOUTHFUL EXUBERANCE
A trendy design

Y - MESH

Y-MESH is a youthful designed chair ergonomically approved by multiple companies across the country.

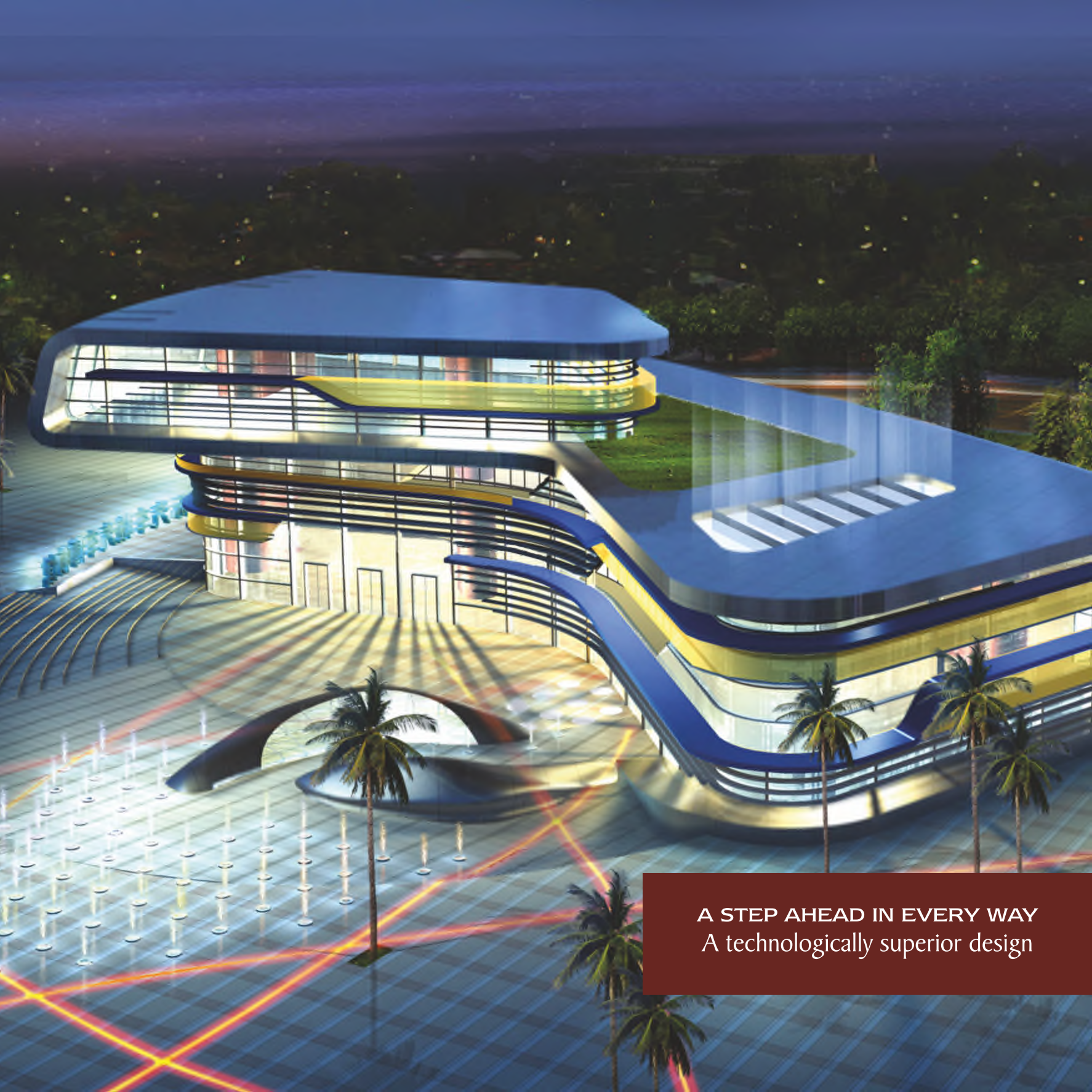


High Back



Medium Back





A STEP AHEAD IN EVERY WAY
A technologically superior design

VIO

VIO task chair comes with an 'S' curved body shape, nylon back with adjustable lumbar support, and an XXL seat that fits all sizes. Multi point locking mechanics with 2 way adjustable arms.



High Back



Medium Back





QUALITY BEYOND COMPARE
An essential model for the high achievers

SCOPE

The SCOPE task chair with essential ergonomic functions, provides instant comfort and ease for long working hours, with its exclusive wrap around design and knee tilt multi lock mechanism seat which has extra depth for comfort.

Medium Back





FUSION OF FORM & FUNCTION
Design that compliments functionality

FUSE

A thinking chair made with completely adjustable Fit-to-Sit features, & the back is injected with specialized Elasto mesh to suit all body comforts and weights. The Fuse chair has complete lumbar support with adjustable multiple direction and a futuristic design to feel good.



High Back



Medium Back





SLEEK & STYLISH
Elegance personified

BRIO

BRIO sleek frame with leatherite upholstery, has internal adjustable lumbar with multi position locking.

Elegant upholstery and chrome finish base with 60mm castors for free flow.



High Back



Medium Back





CORPORATE CONVENIENCE
Individualistic style & comfort

CHROMOZONE

Sleek chrome designed frame
chairs in 2 Options -
Chromozone Leatherette
Chromozone Cushion
Each design has its own
individual style and sleek looks
for a corporate office.



High Back



Low Back





CALIBRATED FOR COMFORT

A luxurious look & feel

ZIPP

A cushion back chair with 50-55 high density Moulded Polyurethane Foam designed with an upright curved lumbar support. A 2 piece plywood finished with fabric or Leatherette to complement its design. A self calibrated mechanism is incorporated in the Zipp Chair to give better comfort and feel of the chair.



High Back



Fabric



Leatherette

Medium Back



FABULOUSLY FUTURISTIC
Designed for the new generation

WAVE

A new chair designed for a family of new start-ups and home offices. Compact in design with a back-push mechanism, and sleek back with a lumbar support feature to support your back to stay up-right. Wave is a young generation task chair to look forward to.



E-MESH



High Back



The E Mesh boasts of a sleek wire rod frame, ergonomically designed with a transparent mesh and the option of an external lumbar support. It has the Synchro-tilt mechanism for easy movement of the back, adjustable arms with Soft PU Pad and PU Cushion with extra curve for good blood circulation below the thighs. It has a Nylon/Chrome base with Nylon free movement castors. A true chair which embodies the 'MADE-IN-INDIA' campaign. A rugged, sturdy and sleek chair, which is also economical.

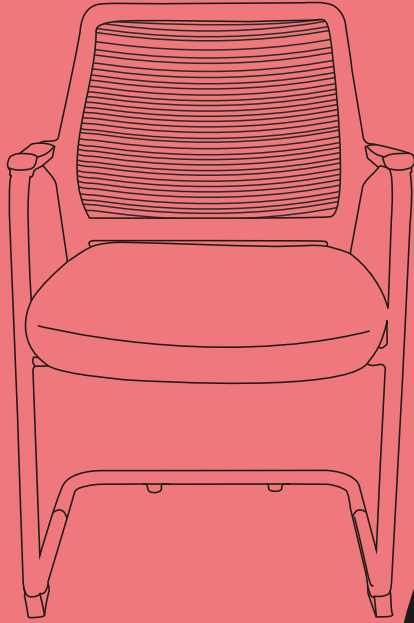


Medium Back



ERGONOMICAL REPRESENTATION OF OFFICE CHAIRS

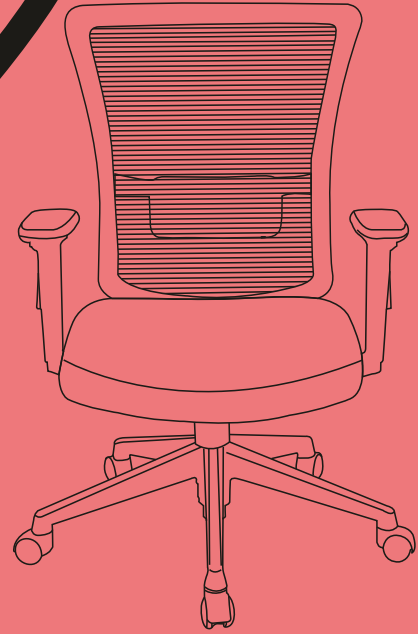
EVO



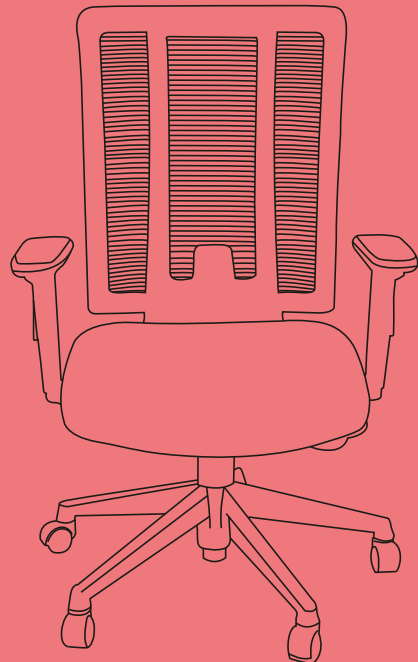
LOOP



FLOAT



TRAP





SOPHISTICATION WITH FUNCTIONALITY
A true evolution in design

EVO

EVO chair is an outcome of the Float task chair with a complete new evolution in sleek training and visitor mesh chair.



**Evo Training with
Tablet & Wheels**



Evo Visitors



Evo Stack





CONTEMPORARY CONVENIENCE
A new generation expression

HARVARD

Harvard is a millennial Training /Study /Visitor chair with a seat which has a nesting feature and the back in sleek mesh designed frame. The training tablet is an anti-shock tablet which takes a heavy load on its back. Options of wheels are available in the chair according to the user.



**Harvard Training with
Tablet & Wheels**





STURDY & TRUSTWORTHY

You can always relay on it

BAY TANDEM

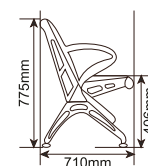
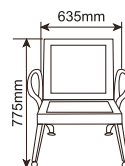
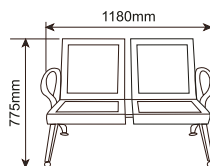
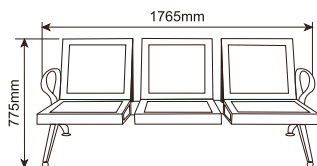
A sleek and compact representation of public seating with a trendy international design. It is available in different configurations and finishes. A heavy duty chair which can withstand high public usage in multi purpose halls, airports, malls, hospitals, educational institutions & offices. You can configure the Bay Tandem in the way that suits your need.



WITH CUSHION



WITHOUT CUSHION





CLASSY & SUSTAINABLE
Technology at its best

AERO

The latest in the multi seater series with options of 3/4 seater. With the smart technology of Polyurethane seat and an aluminium framework, it is very classy in looks and comfortable to sit. Complete ease to maintain in public areas and also adheres to recyclable parts for the future. Free movement easy knock down fitment.



PACE SEATING SYSTEMS (P) LTD.

EXPERIENCE ZONE - BENGALURU:

#40, 'C' Street, Haines Road, Cleveland Town,
Bengaluru - 560 005, Karnataka (India).

T: +91 80 4165 9342 / 4165 9843

E: sales@paceseatingindia.com/
paceseating@gmail.com

EXPERIENCE ZONE - HYDERABAD:

8-2-120/ 86/9, GK Times Square,
2nd Floor, Road No.2, Banjara Hills,
Opp Park Hyatt, Hyderabad - 500034, Telangana (India).

T: +91 40 4852 9992

E: paceseatinghyd@gmail.com

EXPERIENCE ZONE - CHENNAI:

BIG SOFA

106/26, Landon's Road, Kilpauk,
Chennai - 600010, Tamil Nadu (India)

T: + 91 9566130375

E: sales@paceseatingindia.com/ bigseating@gmail.com

WORKS

Old #36, 37 & 38, New #5/6, 4th Cross Road,
Raghavendra Layout, Tumkur Road, Yeshwanthpur,
Bengaluru - 560 022, Karnataka (India).

T: +91 80 4213 7161

M: +91 9342090804

E: export@paceseatingindia.com

www.paceseatingindia.com

